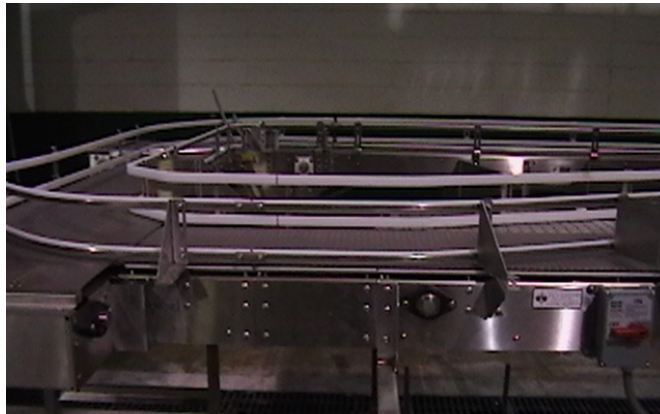




**SE&M** is an innovative company dedicated to develop custom solutions for material flow or manufacturing process improvements by supplying consulting, project management, and prototyping through final customer acceptance. SE&M possesses an in depth and wide array of experience in container conveying and parts handling applications. This experience includes; initial layout, project management, engineering design, manufacture, testing, installation, and commissioning of projects of all sizes. From food & beverage to automotive piece parts to assembly station lines to pallet handling, SE&M has the expertise to bring your project to your desired conclusion. SE&M also provides programming and integration services in addition to, or along with the material handling solutions.

---

## **Tabletop Conveyor**



SE&M's table top chain conveyors are custom-engineered to handle a variety of packaged products. Applications include: food, beverage, household products, pharmaceuticals, and empty containers.

SE&M's table top conveyors are available in both stainless and powder coated mild steel versions. Single, multi-chain, and mat top chain configurations are also available.



## Pallet Conveyor



SE&M's product line includes transportation and accumulation pallet conveyor. Our standard designs can be modified to meet your entire pallet handling requirements for wood, plastic or fiber pallets. The pallet conveyors can be prewired for integration into a new or existing system or supplied as a stand-alone pallet system.

SE&M offers a line of high quality conveyor products that include: turntables, transfers, pallet dispensers, and pallet stackers.

## Case Conveyor



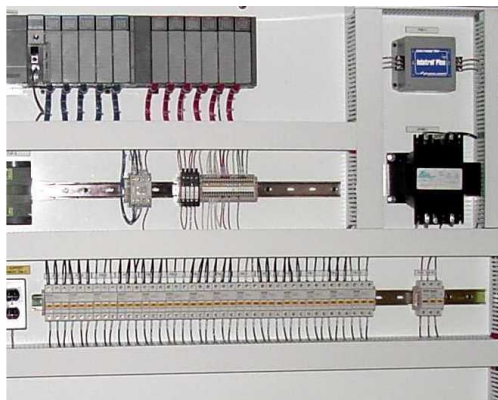
As a Roach distributor SE&M has a complete line of case handling conveyor designed to be used in a wide variety of applications. The product line includes transportation and accumulation conveyor, meter belts, and incline conveyor. Specialty items such as case turners, switches, convergers, and divergers are also part of this product line.



SE&M's products are designed to meet all your case conveying needs, preserving the integrity of the case, at a value price.



## Control Panel and Consoles



SE&M builds control panels to house all of the components to run a successful system. SE&M possesses the knowledge and experience to combine the PLC and operator interface into an "easy to maintain" system. Panels are built in-house, guaranteeing adherence to strict assembly standards. Operator interfaces from computer-based apps to touchscreens to pushbuttons can be incorporated seamlessly into the system. All wires are clearly marked from the I/O card through junction boxes to the final device allowing easy traceability. Our panel quality is second to none. Neatness and good appearance are standard.

SE&M has supplies complete stand-alone systems or partial sub-systems that can be integrated into an existing production line.

## Change Parts



SE&M provides support, including Change Parts and Upgrades, to numerous types of equipment originally manufactured by Simplimatic Engineering Company (a.k.a. Crown-Simplimatic, SECO, and several other names). This equipment includes but is not limited to Bulk Palletizers and their associated equipment, High-Speed Traypackers and Shrink Wrappers.

SE&M has many of the original job files, drawings, and associated documentation. Contact us with specific questions regarding any of Simplimatic's equipment.



## Services Provided

SE&M realizes the importance that control systems play in improving and maintaining the productivity of manufacturing environments. Accordingly, we employ a staff with years of experience in the engineering, fabrication, and commissioning of parts-handling and food & beverage control systems.

We are pleased to inform you of the services that are now available to you.

- Project Management services (from layout design through project completion)
- Panel and Control Station fabrication to NEMA, UL, and/or IEC standards
- Programming and Documentation of:
  - Programmable Logic Controllers (PLCs)
  - Man Machine Interfaces (touchscreens, MMI, HMI, etc.)
  - Variable Frequency Drives (VFDs, AFDs)
  - Servo Drives (single or multi-axis)
- Optimized line operation by the integration (interfacing) of equipment from several vendors with a central control system
- Modification of existing control systems (upgrades, etc.)
- Design and customization of motor control centers (MCCs)
- Network design and commissioning (DH+, RIO, DeviceNet, etc.)
- Design and Manufacture of special machinery or machine modifications
- CAD based drafting services
- Erect most conveyor systems and machinery at our facility;
  - Add controls and/or equipment wiring (if necessary)
  - Provide Run-off Testing prior to installation
- Installation Services (electrical and mechanical)
- Start-up assistance
- Operator and Maintenance training

Due to the variety of experience employed by SE&M, the above list is non-exclusive and we would be pleased to look at any project you may be considering. Depending on your needs, we can offer you all or any portion of the services listed above.



## Strategic Partner



**ESS Technologies, Inc.** manufactures custom packaging machinery for a number of applications, including packaging pharmaceuticals, nutraceuticals, consumer products, and cosmetics, as well as diagnostic test kit assembly and medical device assembly. Their engineers have designed and integrated complete packaging lines for:

- Integrated Robotics
- Monoblock Fillers / Cappers
- Robotic Palletizing Systems
- Medical Device Assembly Systems
- Automatic Cartoners Case Packers
- Package Wrappers
- Tube Fillers/Closers
- Form /Fill /Seal Machines
- Custom Designed Systems



ESS Technologies, Inc. is a US distributor of Bergami cartoners, tube fillers, case packers, and wrappers, as well as a strategic partner with FANUC Robotics for secondary packaging of pharmaceuticals and cosmetics. Engineered for reliability and efficiency, ESS Technologies' products offer tomorrow's packaging technology today.

